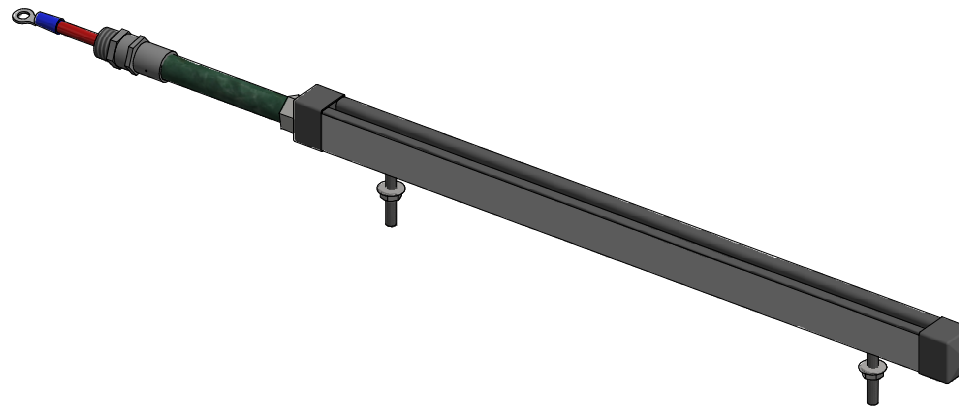


2 Studs positioned 40mm off of each end
every extra stud is added evenly



Meech International
2 Network Point
Range Road, Witley
OX20 0YN, UK
Tel: +44 (0) 1993 706700
Fax: +44 (0) 1993 778977
email: sales@meech.com
web: www.meech.com

'Meech International' is a trading style
of Meech Static Eliminators Ltd

TITLE :
914 Assembly

DRAWING NO:
A914

MATERIAL :
Various

FINISH :
Various

TOLERANCE UNLESS OTHERWISE SPECIFIED
Machined Work Metric $\pm 0.1\text{mm}$
Unmachined Fabrications $\pm 1\text{mm}$
Angular $\pm 0^{\circ}30'$

DIMENSIONS IN MM DO NOT SCALE
CRITICAL TO FUNCTION (CTF)
DIMENSIONS AS MARKED

PROJECTION SHEET SCALE
A3 NTS

DATE :
12/03/2020

REVISION :
1

SHEET :
1 / 1

DETAIL :
Marketing

DRAWN BY :
Samuel Davies

CHECKED BY :
David Hyde

SIGNED OFF BY :
David Hyde

914

Length (mm)	No. of Studs
0-1000	2
1001-1500	3
1501-2000	4
2001-2500	5
2501-3000	6
3001-3500	7
3501-4000	8

COPYRIGHT © MEECH STATIC ELIMINATORS

THIS DOCUMENT AND THE INFORMATION THEREIN IS THE PROPERTY OF THE MEECH GROUP AND SHOULD NOT BE COPIED IN WHOLE OR USED FOR MANUFACTURE OR OTHERWISE DISCLOSED WITHOUT THE PRIOR WRITTEN CONSENT OF MEECH INTERNATIONAL.